



desarrollo
urbano

MADRID

Webinar The EU Afforestation, Reforestation and Tree Planting Guidelines of the European Commission



Green infrastructure.

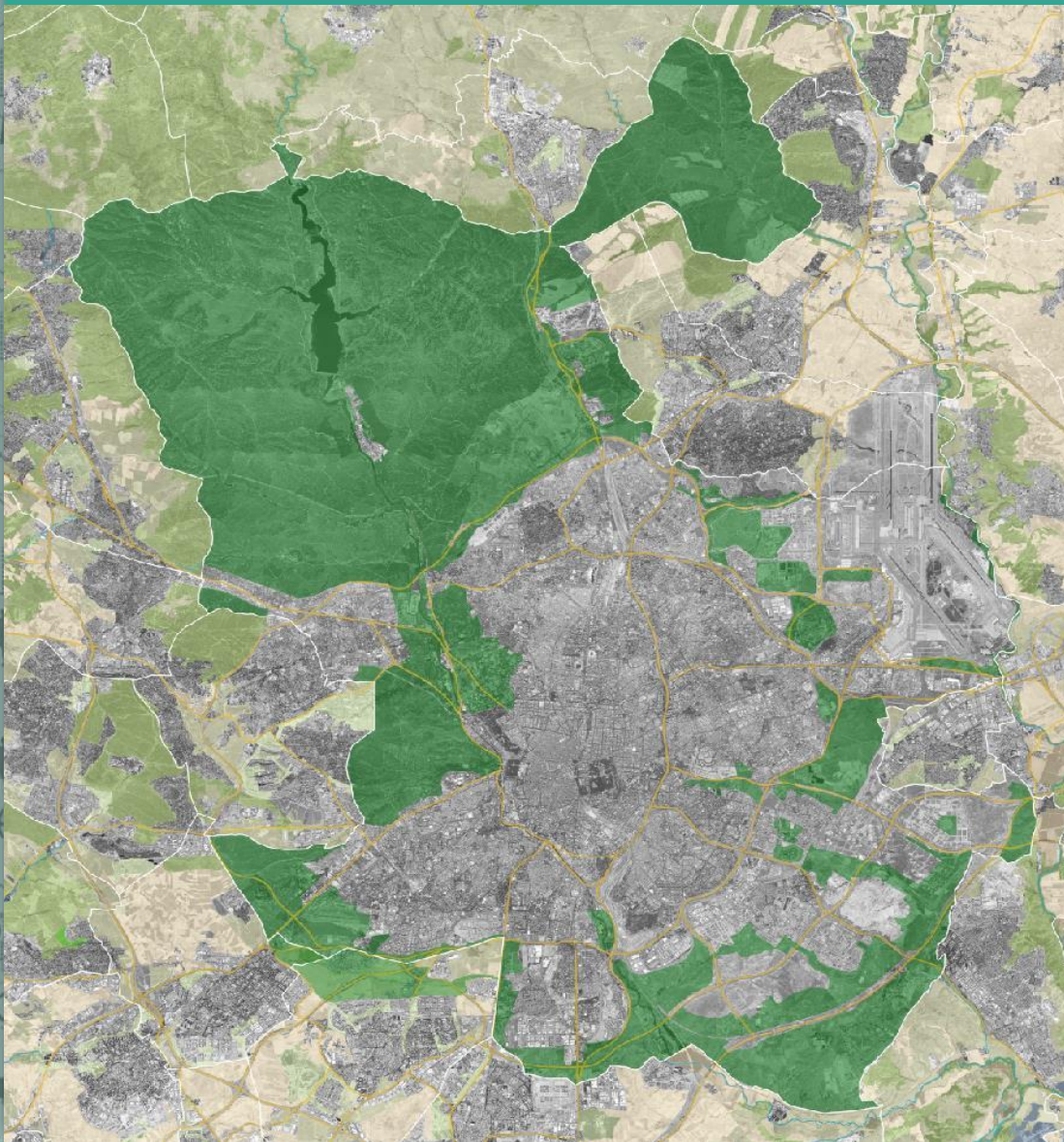
Afforestation of new 4,900 ha with 1.5 million trees connecting existing green areas.

Objectives:

- Environmental, economic and social *sustainability*.
- Improving citizens' *welfare and health*.

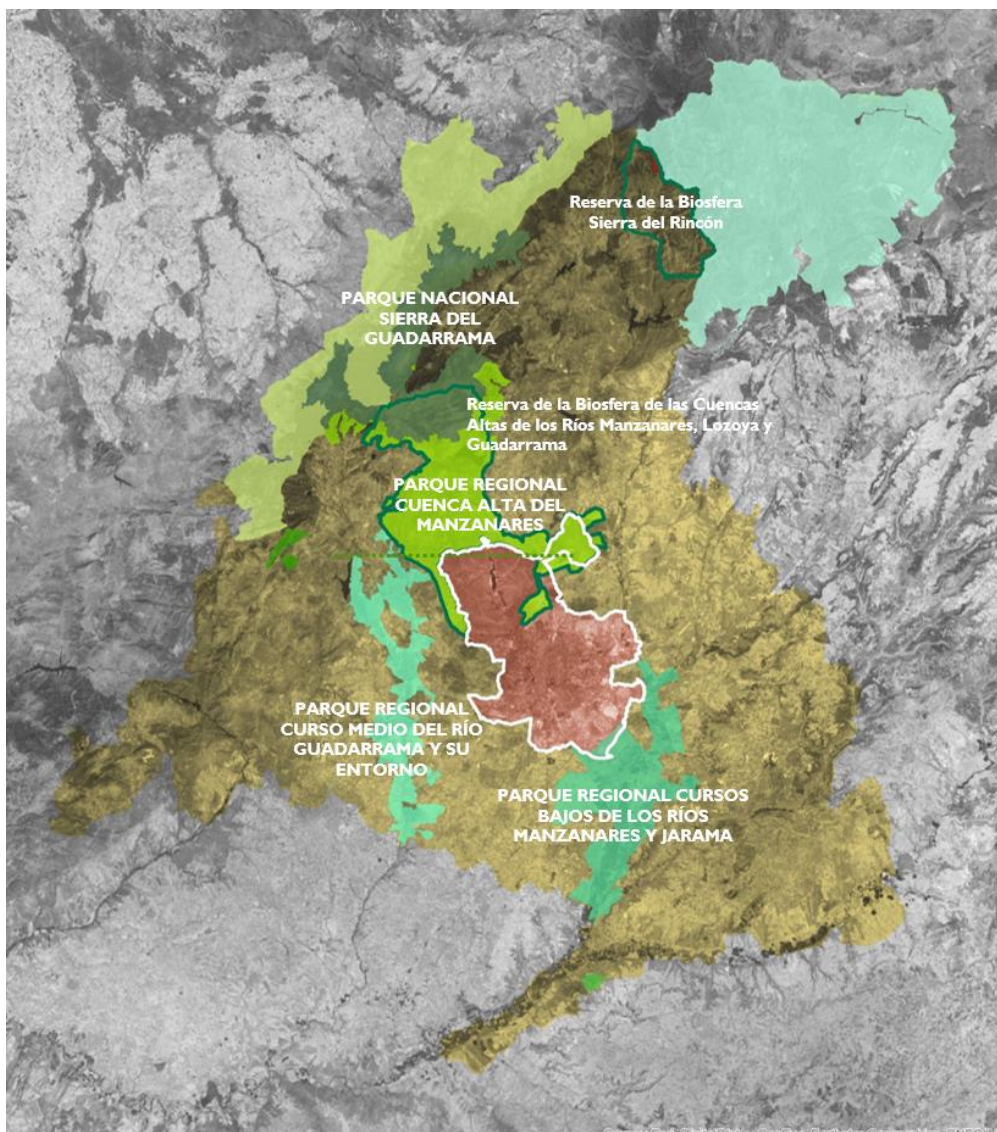
Included in different City Council's strategies with **long-term** vision.

Madrid is part of EU #MissionCities

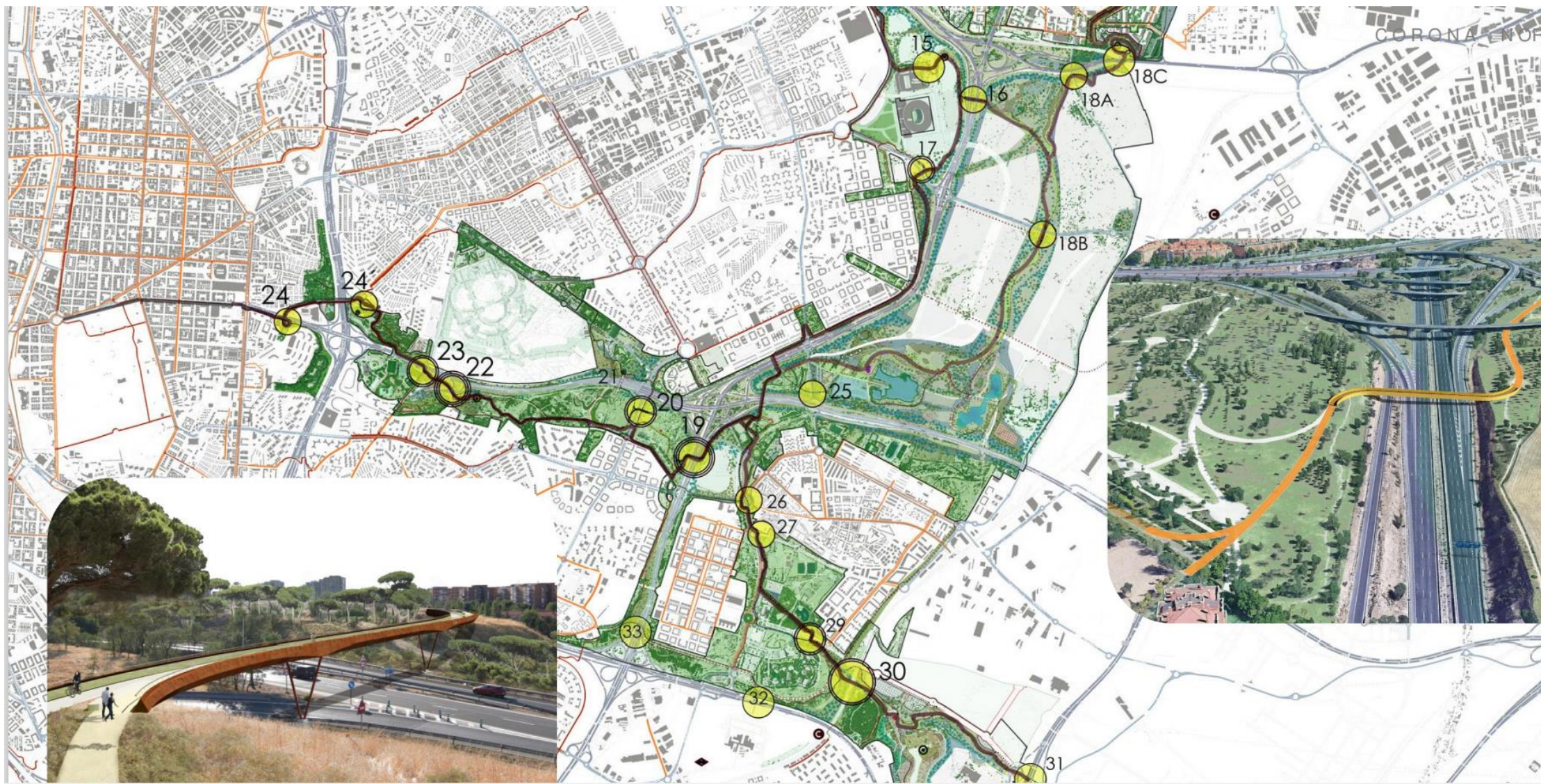


CONNECTIVITY. Benefit for biodiversity and the climate

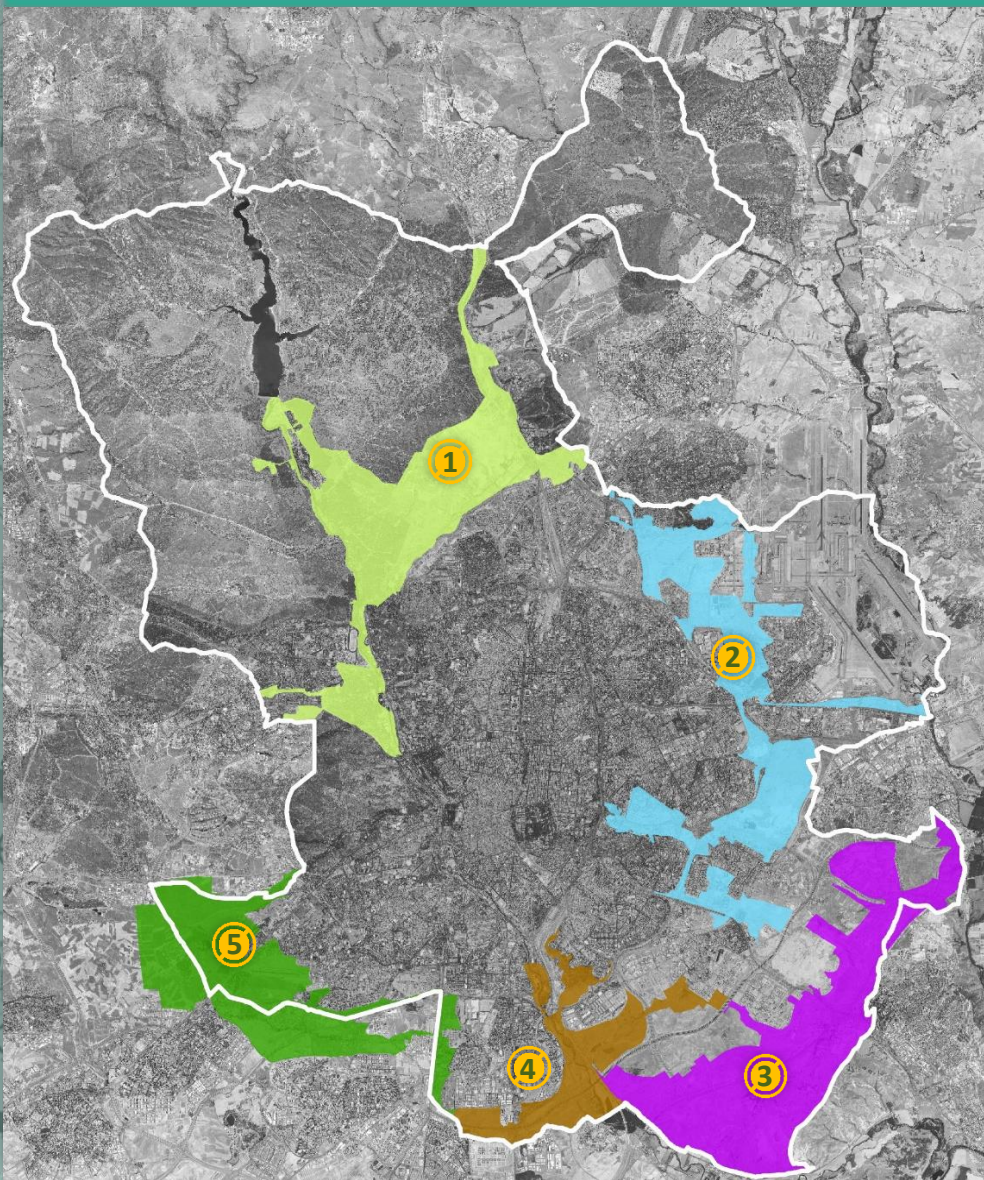
- REGIONAL: relevant protected parks (Natura 2000) connected with this project. Importance of the rivers and their forests as connectors.
- LOCAL: green areas connected. Forestal avenue of 142 km.



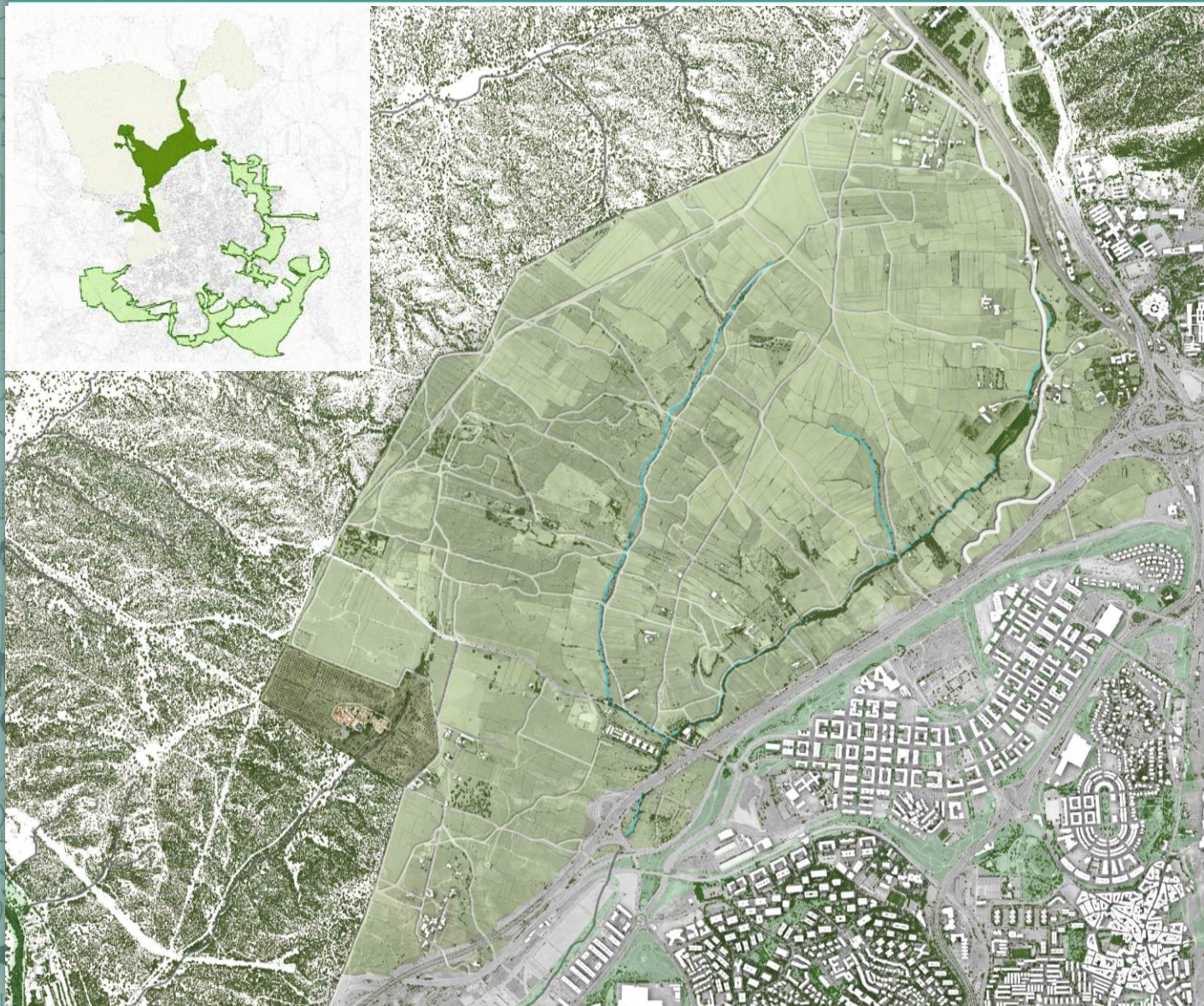
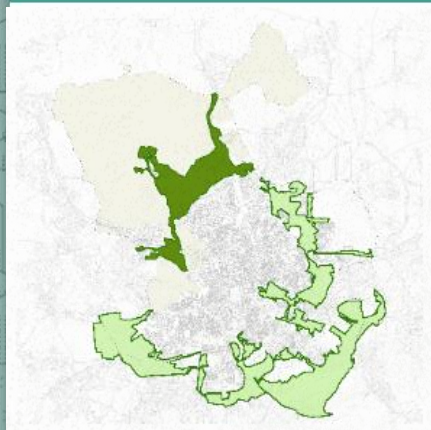
CONNECTIVITY. 20 ecopassages planned



- Different characteristics of the ecosystems, division of the territorial area of intervention into five work units.
- Search for innovation and integration into the existing landscape.
- Jury, participation of society.
- Multidisciplinary teams.
- Creation of working works to share knowledge and establish common criteria.



MOSAIC OF LAND USES. AGROFORESTRY

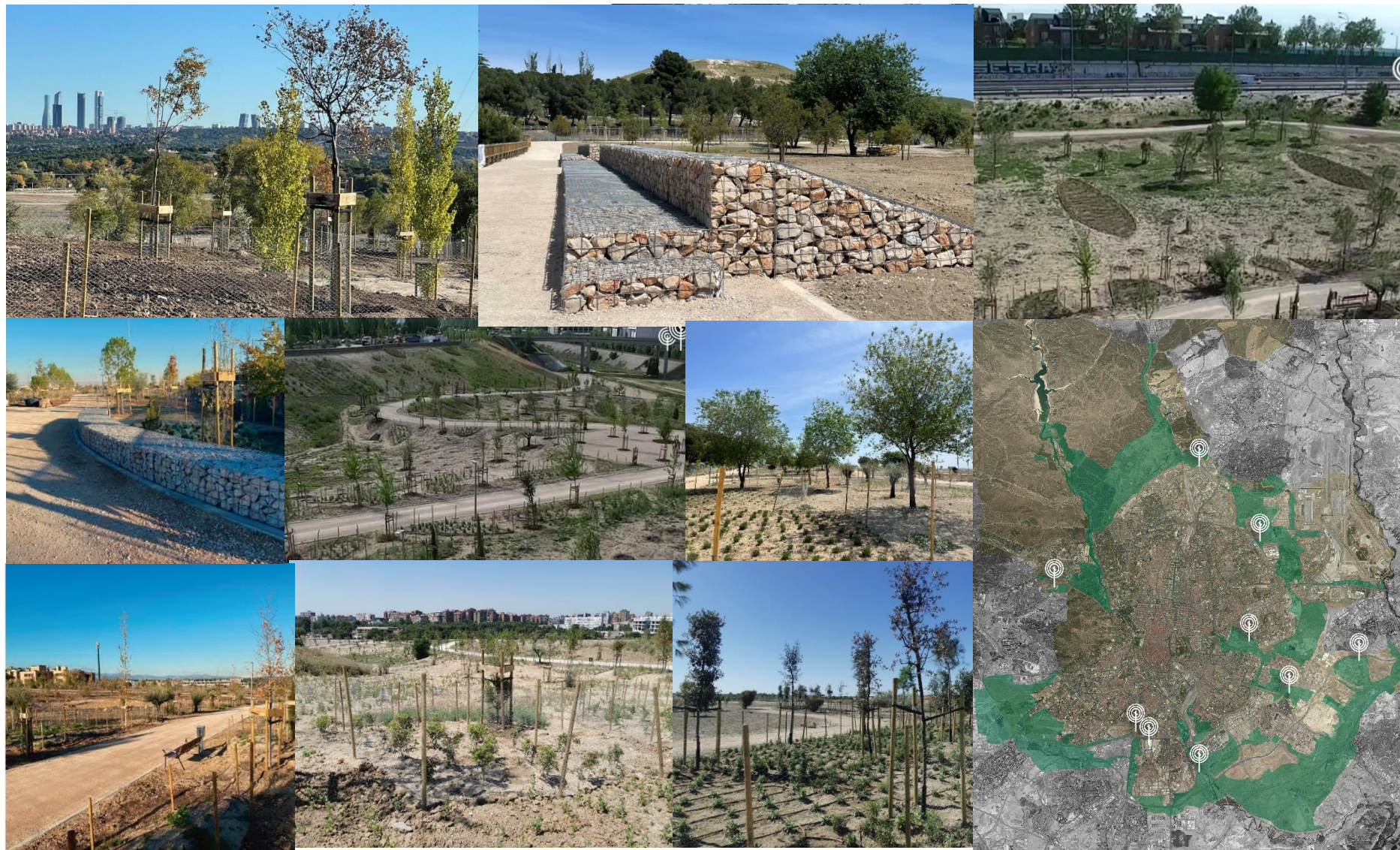


8

projects

52.5

ha



PART II. TREE PLANTING IN URBAN ECOSYSTEMS:

- Green urban planning and management tools.
- Conservation and enhancement of biodiversity in urban areas.
- Promoting ecosystem services in urban areas.
- Involve citizens in urban areas.
- Monitoring and adaptative management.

Plan Especial de Protección y Mejora de la Infraestructura Verde Bosque Metropolitano (one plan for each of the five work units of the international contest).

- Definition of the **elements** of the green infrastructure (types of forest, ecopassages, public facilities, path network...).
- **Land** uses and management (possible acquisition if there is public interest).
- **Urbanization** conditions.
- Impacts and environmental **analysis**. Promotion of ecosystem services.
- **Public consultation** until 12th June 2023.

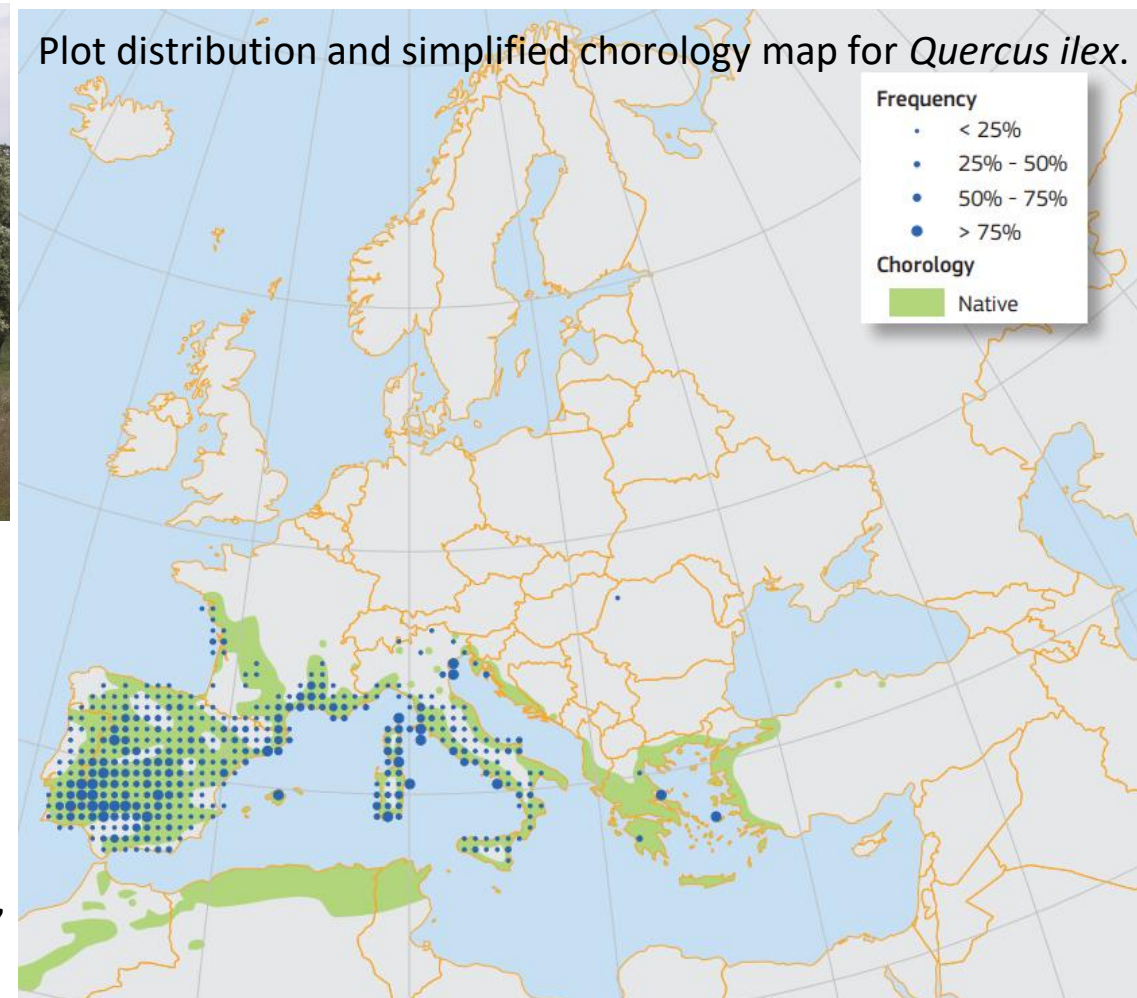
Example: https://www-2.munimadrid.es/fsdescargas/VISAE_WEBPUB/NTI/135-2022-02674/listado.htm



Quercus ilex, is a broadleaved tree or shrub, which can grow up to 25m. It is native to the centralwestern Mediterranean basin, where it represents the dominating species in woodlands and maquis vegetation.

In the Iberian Peninsula the holm oak woodlands are historically managed as savannah-like ecosystems, with large, isolated trees emerging from a grassland. These formations, known as **dehesas** in Spain provide multiple ecosystem services.

Plot distribution and simplified chorology map for *Quercus ilex*.



Source: European Atlas of Forest Tree Species. <https://forest.jrc.ec.europa.eu/en/european-atlas/atlas-download-page>

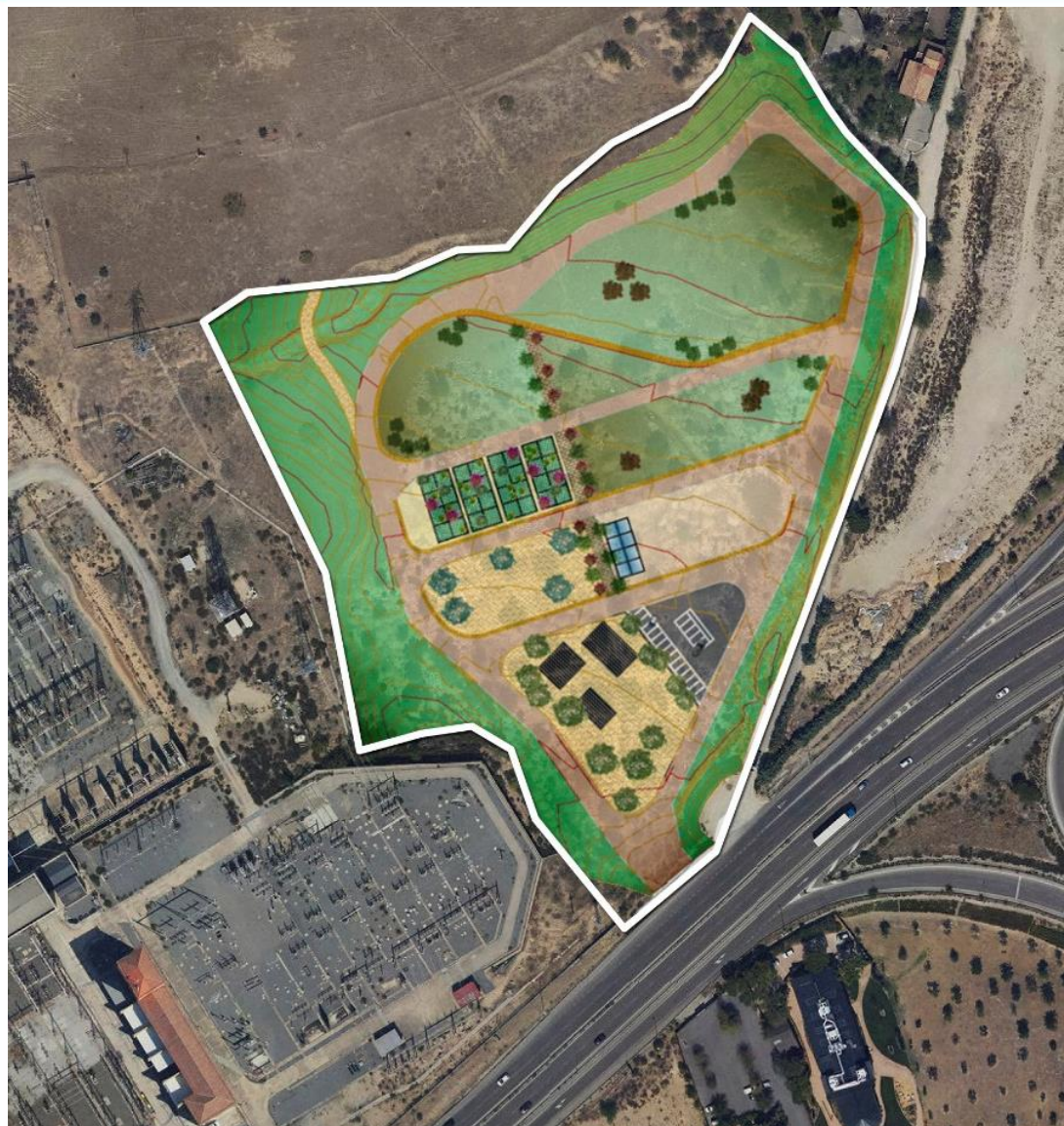
PROMOTE THE MIXING OF SPECIES-TREES AND BUSHES





- Rain gardens.
- Efficient irrigation systems.
- Native species adapted to Mediterranean climate.

- Objective: production of native trees of different ages for planting in Bosque Metropolitano.





- **Bosque Metropolitano** contributes to the sustainability of the city of Madrid and the wellbeing of its citizens, generating a wide range of ecosystem services.
- The **European Commission’ guidelines** recently published are **very useful for local governments** to take decisions on how to develop a green infrastructure like Bosque Metropolitano, promoting biodiversity, resilience and optimizing the generation of ecosystem services.
- It is essential **to involve all the stakeholders** in biodiversity-friendly afforestation, reforestation and tree planting.
- **Funding and technical support** are crucial to achieve the “3 Billion Trees” Pledge. The guidance booklet on *financial resources* supporting action under the “3 Billion Trees” Pledge, to be produced in 2023, will be very welcomed.



THANK YOU



desarrollo
urbano

MADRID

Raquel Bravo Rubio

Chief of the Communication and Institutional Relations
Department

General Directorate for Strategic Planning

<https://bosquemetropolitano.madrid.es>